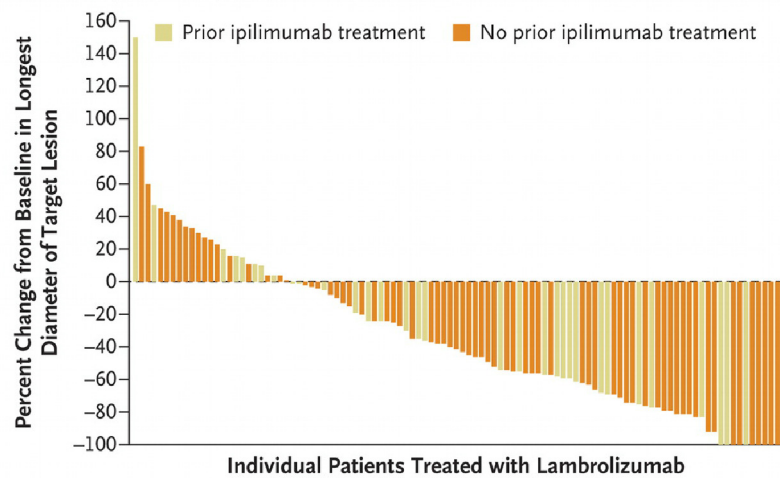
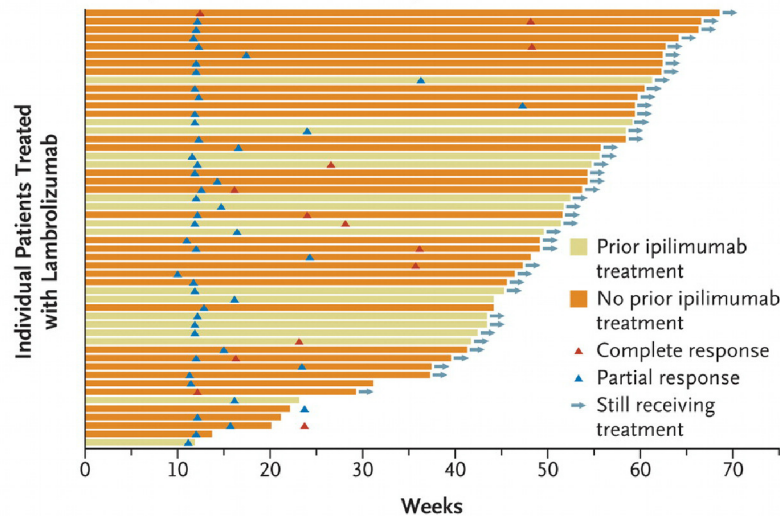


### A Best Objective Response



### B Time to Response and Duration of Study Treatment



**Figure 1. Antitumor Activity of Lambrolizumab.**

Data on the antitumor activity of lambrolizumab, as assessed by independent, central radiologic review, is shown for the patients who could be evaluated. Panel A shows a waterfall plot of the best objective response according to prior treatment with ipilimumab, measured as the maximum change from baseline in the sum of the longest diameter of each target lesion. A total of 10 of 103 patients with radiographically measurable disease at baseline and at least one evaluation after treatment had a 100% reduction in target lesions. Panel B shows the time to response and the duration of study treatment. A total of 42 of the 52 patients who had a response were still receiving the study treatment at the time of the current analysis. Of the 10 patients who discontinued therapy, 5 discontinued owing to toxic effects, and 2 of these patients showed improvement in their response after discontinuation (denoted by the two triangles that are outside the bar of the on-treatment period).